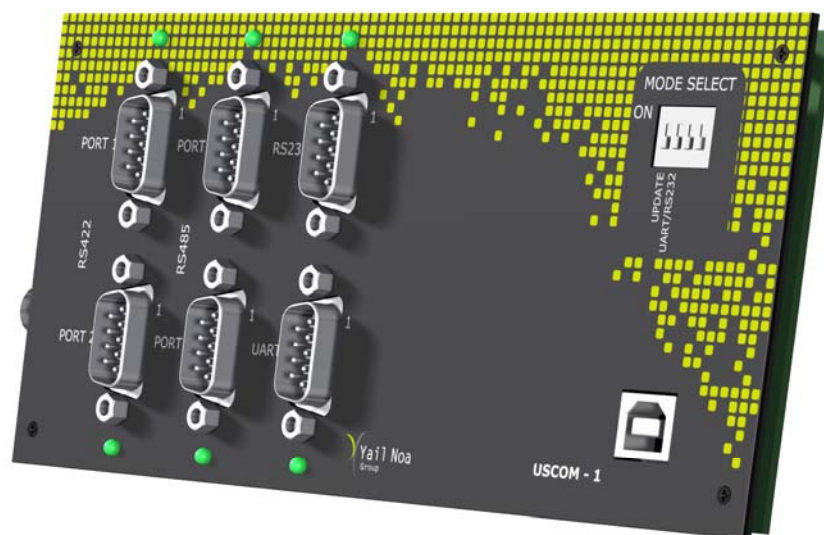


# USCOM-1

## Universal Serial Communication

### User Manual & Quick Start



UM-002613

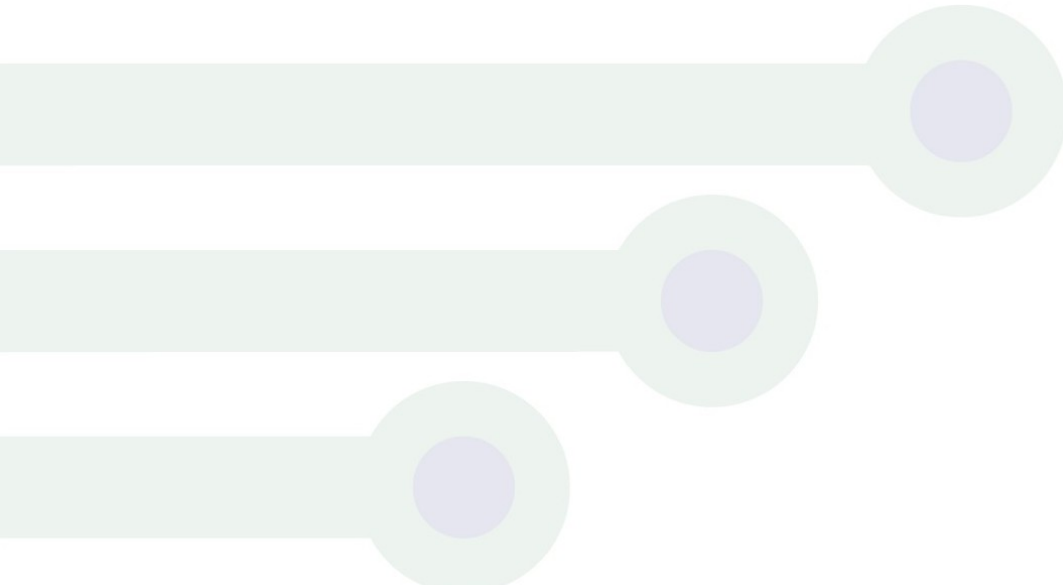
6 Yad-Harutzim st.  
Kfar-Saba, 4464103, Israel  
Fax: 09-7417422  
Tel: 09-7417411  
[www.adcom-prodcuts.com](http://www.adcom-prodcuts.com)



Revision A

---

Version	Issued By	Issue Date	Comments
1.0	Eli Moshe	5.11.2013	New Product





# Table of Contents

<b>Quick Start .....</b>	<b>4</b>
<b>User Manual .....</b>	<b>5</b>
1. Introduction .....	5
1.1 Purpose .....	5
1.2 Scope .....	5
1.3 Pinout Assignment .....	5
1.4 UART .....	5



## USCOM-1 Introduction

The USCOM-1 device is a Serial Communication Interface panel. It connects to PC USB Hi-Speed port and communicates with a variety of serial communication device.

There are 6 ports for serial communication:

- ✓ 2 ports of RS422
- ✓ 2 ports of RS485
- ✓ 1 port of RS232
- ✓ 1 port UART (TTL levels)

All ports are recognized by the PC as COM Ports.

Any PC application that access COM Port (Such as HyperTerminal or other) can be used with the USCOM-1.

### Quick Start

1. Down load driver
2. Install the driver as described step by step in Appendix A.
3. RS232 and UART share the same End Point. To select UART or RS232 use the DIP SWITCH **Mode Select** SW2.
4. All other serial communication can operate simultaneously.
5. Run your application and start communication

**End of Quick Start**

# User Manual

## 1. Introduction

### 1.1 Purpose

The purpose of this document is to guide the user through the functional usage of the USCOM-1.

### 1.2 Scope

The Universal Serial Communication - USCOM-1- serves as a panel mount device for 6 ports of most popular serial communication.

The USCOM-1 is connected to PC USB Hi-Speed and is self operated – no external power supply is required.

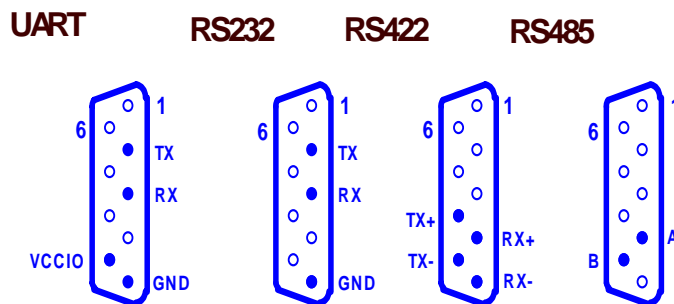
The following physical layers are available:

- ✓ 2 ports of RS422 – each up to 10Mbps
- ✓ 2 ports of RS485 – each up to 5Mbps
- ✓ 1 port of RS232 – up to 1Mbps
- ✓ 1 port UART (TTL levels) – up to 1Mbps

All ports are recognized by the PC as COM Ports.

### 1.3 Pin out Assignment

The signal assignment of each pin is shown below:



### 1.4 UART

UART signal voltage level is LVTTTL compatible.

Connecting another voltage between 1.65V-5.25V to pin 9(VCCIO) will change the level to the required new one.

## END of User Manual