

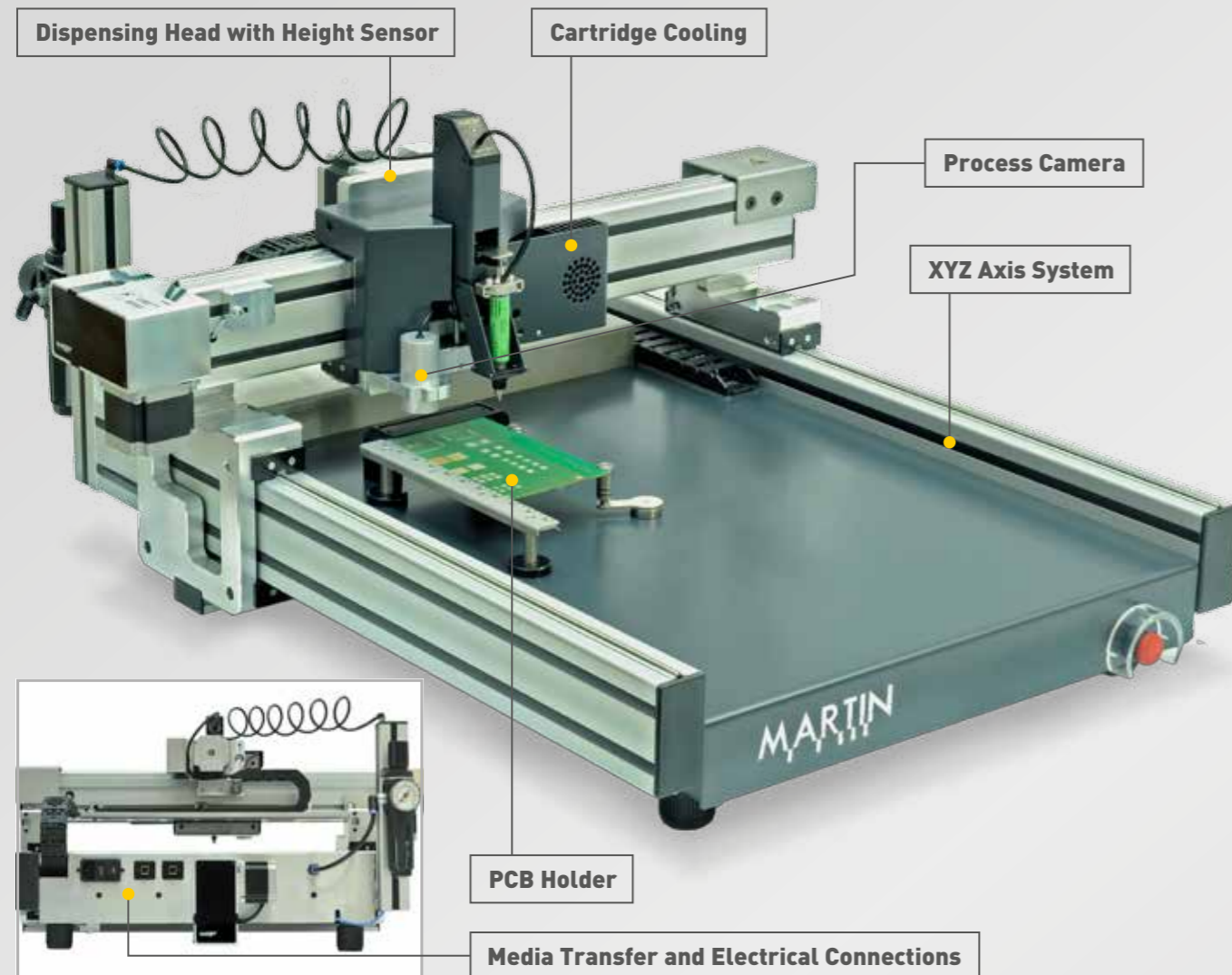


Dispense Technology

Straight to the Point

DOTLINER 07 – Not Exclusively for Solder Pastes

The new DOTLINER family was developed for reliable dispensing of various material. The innovative Advanced-Time-Pressure (ATP) procedure enables high accuracy and reproducibility in particular in dispensing midget dots. Heating and cooling modules thereby provide an optimum process temperature of the dispensing media.



Automatic Dispensing

The PCB is stagnant while the dispensing head moves on the MARTIN dispensing robots. Loading and unloading large assemblies is very easy. Even assemblies of uncommon outside contour are safely loaded. Multiple options allow tempering of the material and precise process control for example. Even measuring of the substrate position is possible through the zoom function of the color camera.

Multi-Function Head

Holders for various cartridge sizes are quickly exchanged and enable easy loading and unloading for the user. The integrated height sensor identifies the height of the dispensing level and sets the dispensing gap perfectly. Furthermore, retain vacuum, nozzle and cartridge heating can be applied.



Dispensing Nozzles

MARTIN nozzles with mechanical spacer dispense with very low primary pressure and steadily invariable dispensing gap. They are adjusted to the nozzle heating in an optimum way.



Process Camera

A color camera with automatic zoom function allows quick and reproducible measurement of assemblies. It is also an indispensable accessory for the inspection of the dispensing result.



EASY DISPENSE Pro

The enhanced EASY DISPENSE Pro software supports the easy handling of the machine. Dispensing processes can be started by means of a QR-Code for example. EASY DISPENSE Pro provides downward compatibility and can process dispensing programs of previous versions.



» EASY DISPENSE Pro



» PCB Fixture

Static Substrate

The work piece rests stable on the working surface during the dispensing operation. Owing to the wide choice of clamps and assembly supports fixation of any substrate is possible to ensure a reliable process. The magnetic substrate holders are very versatile and can be positioned on the working surface as required.

CLEVER DISPENSE 06 – Manual and Flexible

The new CLEVER DISPENSE 06 is a compact tabletop device for reproducible dispensing operations. In addition to the manual application it was also designed for operations in the automation technology sector. The communication by digital interfaces supports the control of temperature modules, retain vacuum or also jet-dispensing heads.

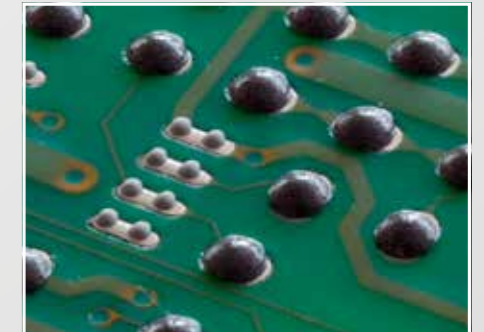


Dispensing in No Time

The perfect balance of electronic, pneumatic and sensors ensures a very high accuracy and reproducibility in dispensing lines and dots. Ideal dispensing tasks can be performed due to enormous configuration depth. All parameters can be stored in dispensing recipes and called up later in an instant.

A Real All-Rounder

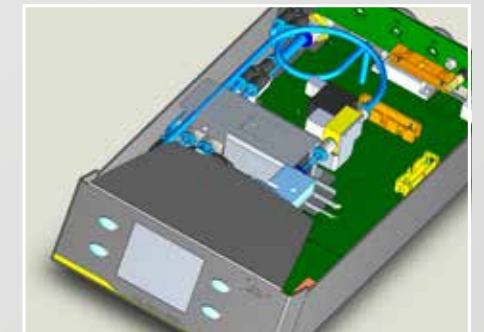
No retrofitting – simple dispense of materials with viscosity from 10 mPas to 100,000 mPas. Without any manual assistance the dispensing energy, retain vacuum as well as the required dispensing pressure are fully electronically controlled.



OEM Integration

The highly integrated and very compact design of the CLEVER DISPENSE 06 (150 x 275 x 65 mm) is perfectly suitable for application in the automation technology.

Being a company with development and production in Germany we have pleasure supporting you in defining individual automation solutions.



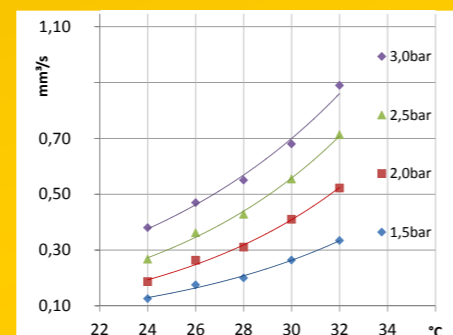
JET DISPENSE

The CLEVER DISPENSE 06 control unit supports the JET DISPENSE dispensing technology and allows quick dispense of lines and dots (up to 200 dots/sec.).



Advanced Time Pressure (ATP) – Technology

Precise measuring of a dispensing pulse energy is the basis for highly accurate dispense. The foundation for this is provided by more than 1,000 data/sec. For viscosity change compensation the current material temperature is also included in the calculation. The result: safety for the customer.



» Flow Rate Solder Paste



» Controll Unit SD 06

SMART DISPENSE 06

Our entry into the well-established ATP technology and working with dispensing recipes. The device controls the dispensing pressure, electronically compensates temperature variations and allows manual setting of the retain vacuum.

MARTIN WEBSHOP – All You Need

MARTIN is your core partner for dispensing needles, dispensing nozzles, cartridges and more consumables of the dispensing technology. Please visit us on the internet at: shop.martin-smt.de and benefit from our online shop: instant price information even without quotations, rapid processing and express shipping on the same day with orders placed by 11 a.m.



The Right Accessories for Special Tasks

Find the right solution for any application in the wide selection of dispensing nozzles and adapters. MARTIN dispensing nozzles are designed to expel material with a minimum primary pressure. They are ideal for dispensing minimal amounts. All nozzles are equipped with a standard Luer-Lock connecting thread and compatible with MARTIN heating modules.

Solder Pastes Lead-Free or Leaded

Solder pastes capable of dispensing – lead-free or leaded – are available in stock, with grain sizes from class III to class VI.

Solder pastes are delivered in thermal packaging from a minimum quantity of one with specifications on optimum dispensing parameters for temperature and pressure included.



Dispensing Nozzles with Spacer

Mechanical spacers ensure constant distance between dispensing nozzle and substrate and thus reproducible results.



Insulating Dispensing Pens

Not only do MARTIN dispensing pens fit ergonomically perfect into a palm but they also protect the medium from uncontrolled heating – for a consistently clean dispensing result.



» shop.martin-smt.de



» Cleaning Set

Cleaning Dispensing Nozzles and Substrates

Cleaning liquids and tools protect your dispensing nozzles from early wear. Solder paste and other materials can be removed without leaving any residues.

Service and Support Around the Globe

Wherever you are, MARTIN is right around the corner. What distinguishes our technologies you are also entitled to expect from our service and support: expertise, reliability and fast reaction. In addition, we support you with our practice-based seminars held at our training centers. They provide you with sound knowledge and make the most modern MARTIN device technology available to you.

