

# PGT<sup>®</sup> 120 Personnel Grounding Tester

( Part No.: 7100.PGT120 )

- The Personnel Grounding Tester PGT<sup>®</sup> 120 is a wrist strap and footwear tester for access control of ESD protected areas (EPA)
- The test result is indicated with audible and visual signals. A relay with a dry contact provides the connection to a door opening system. (Adjustable door opening time 1s and 3s)
- Power supply: Internal battery or external power supply unit
- Wrist strap, right and left shoe testing is simultaneously possible by separate measuring circuits
- In combination with a barrier gate, the footwear measurement can be performed in series **without** pressing a button (hands-free mode).
- Separate measurement of left and right shoe
- Lower limit disabling is possible
- Configurable and disconnectible Beeper
- The unit can be used on bench tops or as a wall mounted unit (Wall mounting requires an additional wall mounting plate)

### Limit values and measure mode:

	Measuring range / Test voltage	Standard
Wrist strap / coil cord	750 kΩ - 35 MΩ	IEC 61340-5-1
Footwear worn on metal plate (values for each shoe)	(100 kΩ*) - 20 / 35 / 70 / 100 MΩ <i>* lower limit can be disabled</i>	IEC 61340-5-1
Footwear in series	40 / 70 / 140 / 200 MΩ (both shoes in series)	---
Test voltage (without load)	100V/DC <i>changeable to 50V or 30V</i>	IEC 61340-5-1



Dimensions:  
150 x 200 x 65 mm

### Supplied with:

- Footwear electrode,
- Power supply 240 V AC,
- 9 V battery
- Manual and calibration certificate (German/English)



Picture: Footwear electrode for separate shoe testing (350 x 500 x 8 mm)



- ▶ 1 year limited warranty
- ▶ Recommended calibration interval: 2 years
- ▶ Persons with active implants (i.e. pacemakers) should use the Personnel Grounding Tester only after consultation with a specialist.

## Technical Information

Page 2 of 2

**Part No.:** 7100.PGT120

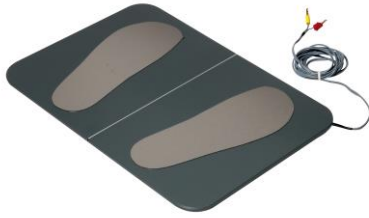


Certified by DQS  
ISO 9001:2008



**Wolfgang Warmbier**<sup>®</sup>  
Systeme gegen Elektrostatik

◆ Untere Gießwiesen 21 ◆ 78247 Hilzingen ◆ Tel.: +49-7731-86880 ◆ Fax: +49-7731-868830



### **Footwear electrode**

Simultaneous left- and right shoe testing

### **Footwear and wrist strap test**

Simultaneous footwear and wrist strap test



### **Hands-free-Mode**

Footwear test without pressing a button

---

### **Accessories (optional):**

- Wall Mounting Plate Part No. 7100.PGT120.WK
- Calibration Unit for PGT<sup>®</sup>120 Part No. 7100.PGT120.CU
- Mat for footwear electrode with yellow bevelled edges Part No. 7100.PGT120.SM

